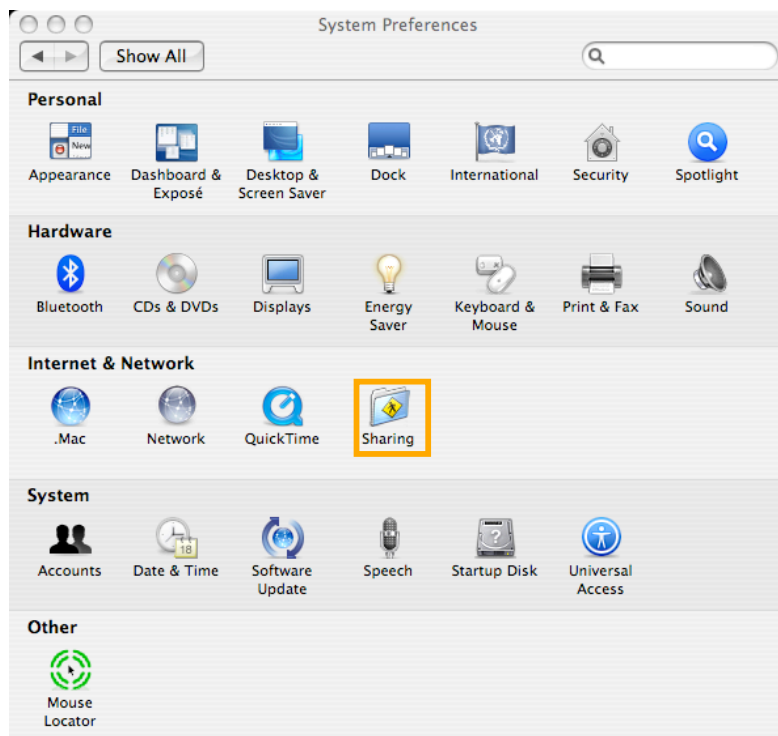


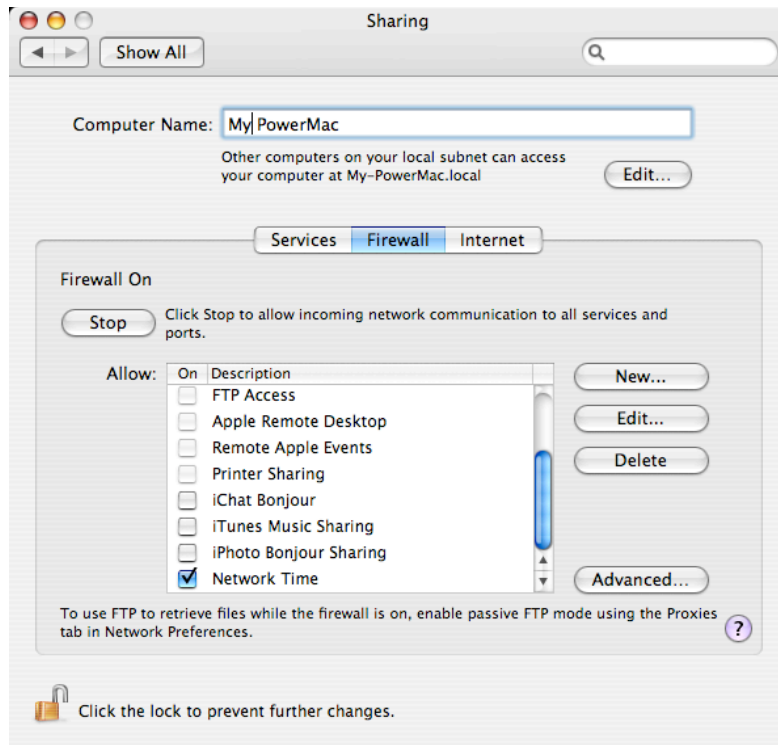
Using Roami with your Mac Firewall

In order to use Roami with your Mac's local firewall (e.g., The Firewall that is enabled via Mac OS X' Sharing Preferences), you will need to allow Roami to receive incoming network traffic. Follow the steps below to accomplish this.

1. Start Roami. Note the URL that is displayed. It will be in the form `###.###.###.###:####`. Take note of the number that follows the colon character. For example, if Roami displays "192.168.1.110:8080" then 8080 is the port number to take note of.
2. Open up the Mac OS X Preferences Panel. Then, open the Sharing settings



3. On the Sharing panel, select the Firewall tab



- Next, create a new entry in your Firewall settings to allow network traffic to reach Roami. Click on “New” button and a form will appear. Fill the form out as below, but replace the number 8080 with the port number that you obtained from step 1, above (if different). Click “OK”

Specify a port on which you would like to receive networking traffic. Other ports can be specified by selecting 'Other' in the Port Name popup. Then enter a the port name and a number (or a range or series of port numbers) along with a description.

Port Name:

TCP Port Number(s):

UDP Port Number(s):

Description:

- The Sharing Preferences Panel should now appear as follows. Roami is now accessible on your local network. In the future, you can enable and disable Roami access by selecting the checkbox.

Sharing

Show All

Computer Name: My PowerMac

Other computers on your local subnet can access your computer at My-PowerMac.local

Edit...

Services Firewall Internet

Firewall On

Stop Click Stop to allow incoming network communication to all services and ports.

Allow:

On	Description
<input type="checkbox"/>	Apple Remote Desktop
<input type="checkbox"/>	Remote Apple Events
<input type="checkbox"/>	Printer Sharing
<input type="checkbox"/>	iChat Bonjour
<input type="checkbox"/>	iTunes Music Sharing
<input type="checkbox"/>	iPhoto Bonjour Sharing
<input checked="" type="checkbox"/>	Network Time
<input checked="" type="checkbox"/>	Roami

New... Edit... Delete Advanced...

To use FTP to retrieve files while the firewall is on, enable passive FTP mode using the Proxies tab in Network Preferences.

Click the lock to prevent further changes.